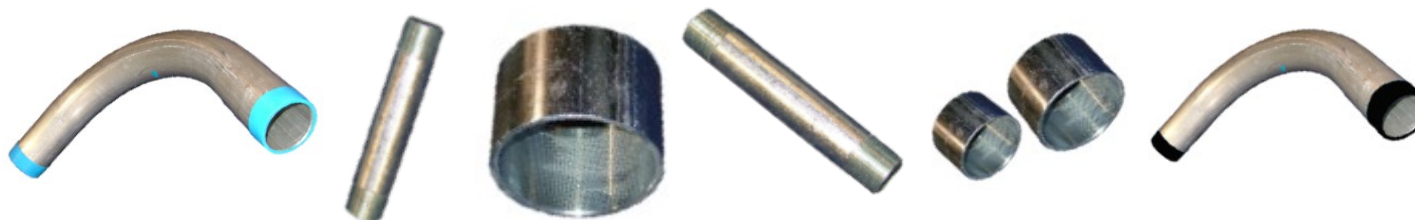
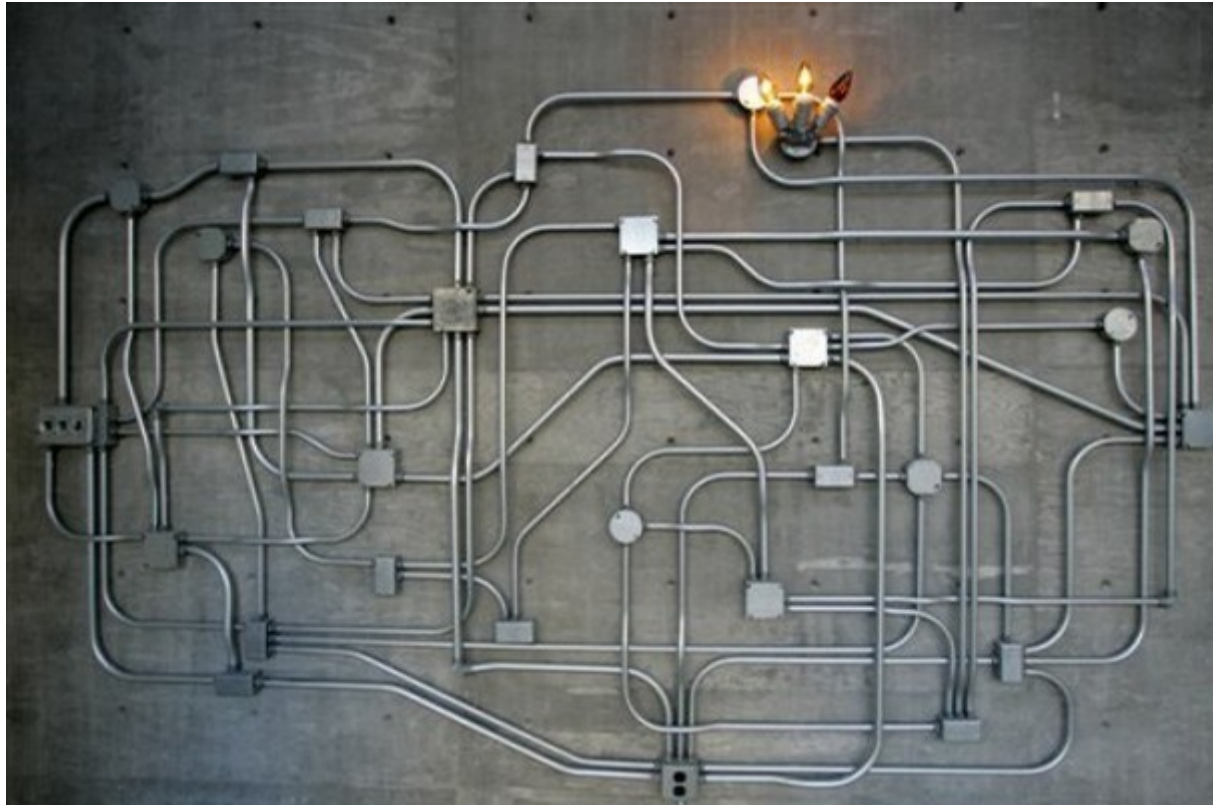


Gci h\ 7cbXi Jh

CONDUIT AND ACCESSORIES



&S%%

- EMT Conduits
- Galvanized Conduits
- Couplings
- Nipples
- Elbows

REPRESENTED BY:
WARSHAW INC.

*' !% HfUZZW5j Y
F]X[Yk ccXžBM%% ,)
(718) 257-2111
(718) 257-2626

CONDUITS

Purpose-designed electrical piping system used for protection and routing of electrical wiring.

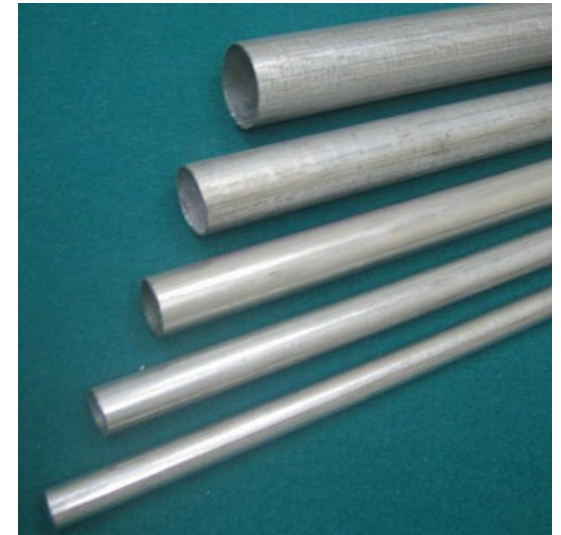
EMT (ELECTRICAL METALLIC TUBING) CONDUIT

Sometimes called **thin-wall conduit**, EMT is commonly used instead of galvanized rigid conduit (GRC), as it is less costly and lighter than GRC. Non-threaded. Lengths of conduit are connected to each other and to equipment with clamp-type fittings.



EMT Conduit, Hot dipped

<u>Size</u>	<u>Type</u>	<u>Item Number</u>
1/2"	• 10' EMT Conduit	E012
3/4"	• 10' EMT Conduit	E034
1"	• 10' EMT Conduit	E100
1 1/4"	• 10' EMT Conduit	E114
1 1/2"	• 10' EMT Conduit	E112
2"	• 10' EMT Conduit	E200
2 1/2"	• 10' EMT Conduit	E212
3"	• 10' EMT Conduit	E300
3 1/2"	• 10' EMT Conduit	E312
4"	• 10' EMT Conduit	E400



GRC (GALVANIZED RIGID CONDUIT)

Galvanized steel tubing, with a tubing wall that is thick enough to allow it to be threaded. A common staple in commercial and industrial construction

<u>Size</u>	<u>Type</u>	<u>Item Number</u>
1/2"	• 10' GRC Conduit	GC012
3/4"	• 10' GRC Conduit	GC034
1"	• 10' GRC Conduit	GC100
1 1/4"	• 10' GRC Conduit	GC114
1 1/2"	• 10' GRC Conduit	GC112
2"	• 10' GRC Conduit	GC200
2 1/2"	• 10' GRC Conduit	GC212
3"	• 10' GRC Conduit	GC300
3 1/2"	• 10' GRC Conduit	GC312
4"	• 10' GRC Conduit	GC400
4 1/2"	• 10' GRC Conduit	GC412
5"	• 10' GRC Conduit	GC500
5 1/2"	• 10' GRC Conduit	GC512
6"	• 10' GRC Conduit	GC600



Galvanized Rigid Conduit





ELBOWS

EMT (ELECTRICAL METALLIC TUBING)

A pipe fitting installed between two lengths of pipe or tube allowing a change of direction. The ends may be machined for butt welding, threaded (usually female), or socketed.



<u>Size</u>	<u>Type</u>	<u>Item Number</u>
1/2"	• 15°	EMT Elbow 3505
3/4"	• 15°	EMT Elbow 3507
1"	• 15°	EMT Elbow 3510
1 1/4"	• 15°	EMT Elbow 3512
1 1/2"	• 15°	EMT Elbow 3515
2"	• 15°	EMT Elbow 3520
2 1/2"	• 15°	EMT Elbow 3525
3"	• 15°	EMT Elbow 3530
3 1/2"	• 15°	EMT Elbow 3535
4"	• 15°	EMT Elbow 3540

ELBOWS

GRC (GALVANIZED RIGID CONDUIT)

<u>Size</u>	<u>Type</u>	<u>Item Number</u>																												
1/2"	• 15°	GRC Elbow	1505																											
3/4"	• 15°	GRC Elbow	1507																											
1"	• 15°	GRC Elbow	1510																											
1 1/4"	• 15°	GRC Elbow	1512																											
1 1/2"	• 15°	GRC Elbow	1515																											
2"	• 15°	GRC Elbow	1520																											
2 1/2"	• 15°	GRC Elbow </tr <tr> <td>3"</td> <td>• 15°</td> <td>GRC Elbow</td> <td>1530</td> </tr> <tr> <td>3 1/2"</td> <td>• 15°</td> <td>GRC Elbow</td> <td>1535</td> </tr> <tr> <td>4"</td> <td>• 15°</td> <td>GRC Elbow</td> <td>1540</td> </tr> <tr> <td>4 1/2"</td> <td>• 15°</td> <td>GRC Elbow</td> <td>1545</td> </tr> <tr> <td>5"</td> <td>• 15°</td> <td>GRC Elbow</td> <td>1550</td> </tr> <tr> <td>5 1/2"</td> <td>• 15°</td> <td>GRC Elbow</td> <td>1555</td> </tr> <tr> <td>6"</td> <td>• 15°</td> <td>GRC Elbow</td> <td>1560</td> </tr>	3"	• 15°	GRC Elbow	1530	3 1/2"	• 15°	GRC Elbow	1535	4"	• 15°	GRC Elbow	1540	4 1/2"	• 15°	GRC Elbow	1545	5"	• 15°	GRC Elbow	1550	5 1/2"	• 15°	GRC Elbow	1555	6"	• 15°	GRC Elbow	1560
3"	• 15°	GRC Elbow	1530																											
3 1/2"	• 15°	GRC Elbow	1535																											
4"	• 15°	GRC Elbow	1540																											
4 1/2"	• 15°	GRC Elbow	1545																											
5"	• 15°	GRC Elbow	1550																											
5 1/2"	• 15°	GRC Elbow	1555																											
6"	• 15°	GRC Elbow	1560																											





ELBOWS

EMT (ELECTRICAL METALLIC TUBING)



22.5° Elbows

Size	Type	Item Number
1/2"	• 22.5° EMT Elbow	3205
3/4"	• 22.5° EMT Elbow	3207
1"	• 22.5° EMT Elbow	3210
1 1/4"	• 22.5° EMT Elbow	3212
1 1/2"	• 22.5° EMT Elbow	3215
2"	• 22.5° EMT Elbow	3220
2 1/2"	• 22.5° EMT Elbow	3225
3"	• 22.5° EMT Elbow	3230
3 1/2"	• 22.5° EMT Elbow	3235
4"	• 22.5° EMT Elbow	3240

ELBOWS

GRC (GALVANIZED RIGID CONDUIT)

Size	Type	Item Number	
1/2"	• 22.5°	GRC Elbow	1205
3/4"	• 22.5°	GRC Elbow	1207
1"	• 22.5°	GRC Elbow	1210
1 1/4"	• 22.5°	GRC Elbow	1212
1 1/2"	• 22.5°	GRC Elbow	1215
2"	• 22.5°	GRC Elbow	1220
2 1/2"	• 22.5°	GRC Elbow	1225
3"	• 22.5°	GRC Elbow <td 1230	
3 1/2"	• 22.5°	GRC Elbow	1235
4"	• 22.5°	GRC Elbow	1240
4 1/2"	• 22.5°	GRC Elbow	1245
5"	• 22.5°	GRC Elbow	1250
5 1/2"	• 22.5°	GRC Elbow	1255
6"	• 22.5°	GRC Elbow	1260





ELBOWS

EMT (ELECTRICAL METALLIC TUBING)



30° Elbows

<u>Size</u>	<u>Type</u>	<u>Item Number</u>
1/2"	• 30° EMT Elbow	3305
3/4"	• 30° EMT Elbow	3307
1"	• 30° EMT Elbow	3310
1 1/4"	• 30° EMT Elbow	3312
1 1/2"	• 30° EMT Elbow	3315
2"	• 30° EMT Elbow	3320
2 1/2"	• 30° EMT Elbow	3325
3"	• 30° EMT Elbow	3330
3 1/2"	• 30° EMT Elbow	3335
4"	• 30° EMT Elbow	3340

ELBOWS

GRC (GALVANIZED RIGID CONDUIT)

<u>Size</u>	<u>Type</u>	<u>Item Number</u>																												
1/2"	• 30°	GRC Elbow	1305																											
3/4"	• 30°	GRC Elbow	1307																											
1"	• 30°	GRC Elbow	1310																											
1 1/4"	• 30°	GRC Elbow	1312																											
1 1/2"	• 30°	GRC Elbow	1315																											
2"	• 30°	GRC Elbow	1320																											
2 1/2"	• 30°	GRC Elbow </tr <tr> <td>3"</td> <td>• 30°</td> <td>GRC Elbow</td> <td>1330</td> </tr> <tr> <td>3 1/2"</td> <td>• 30°</td> <td>GRC Elbow</td> <td>1335</td> </tr> <tr> <td>4"</td> <td>• 30°</td> <td>GRC Elbow</td> <td>1340</td> </tr> <tr> <td>4 1/2"</td> <td>• 30°</td> <td>GRC Elbow</td> <td>1345</td> </tr> <tr> <td>5"</td> <td>• 30°</td> <td>GRC Elbow</td> <td>1350</td> </tr> <tr> <td>5 1/2"</td> <td>• 30°</td> <td>GRC Elbow</td> <td>1355</td> </tr> <tr> <td>6"</td> <td>• 30°</td> <td>GRC Elbow</td> <td>1360</td> </tr>	3"	• 30°	GRC Elbow	1330	3 1/2"	• 30°	GRC Elbow	1335	4"	• 30°	GRC Elbow	1340	4 1/2"	• 30°	GRC Elbow	1345	5"	• 30°	GRC Elbow	1350	5 1/2"	• 30°	GRC Elbow	1355	6"	• 30°	GRC Elbow	1360
3"	• 30°	GRC Elbow	1330																											
3 1/2"	• 30°	GRC Elbow	1335																											
4"	• 30°	GRC Elbow	1340																											
4 1/2"	• 30°	GRC Elbow	1345																											
5"	• 30°	GRC Elbow	1350																											
5 1/2"	• 30°	GRC Elbow	1355																											
6"	• 30°	GRC Elbow	1360																											





ELBOWS

EMT (ELECTRICAL METALLIC TUBING)



45° Elbows

Size	Type	Item Number	
1/2"	• 45°	EMT Elbow	3405
3/4"	• 45°	EMT Elbow	3407
1"	• 45°	EMT Elbow	3410
1 1/4"	• 45°	EMT Elbow	3412
1 1/2"	• 45°	EMT Elbow	3415
2"	• 45°	EMT Elbow	3420
2 1/2"	• 45°	EMT Elbow	3425
3"	• 45°	EMT Elbow	3430
3 1/2"	• 45°	EMT Elbow	3435
4"	• 45°	EMT Elbow	3440

ELBOWS

GRC (GALVANIZED RIGID CONDUIT)

Size	Type	Item Number	
1/2"	• 45°	GRC Elbow	1405
3/4"	• 45°	GRC Elbow	1407
1"	• 45°	GRC Elbow	1410
1 1/4"	• 45°	GRC Elbow	1412
1 1/2"	• 45°	GRC Elbow	1415
2"	• 45°	GRC Elbow	1420
2 1/2"	• 45°	GRC Elbow	1425
3"	• 45°	GRC Elbow <td 1430	
3 1/2"	• 45°	GRC Elbow	1435
4"	• 45°	GRC Elbow	1440
4 1/2"	• 45°	GRC Elbow	1445
5"	• 45°	GRC Elbow	1450
5 1/2"	• 45°	GRC Elbow	1455
6"	• 45°	GRC Elbow	1460





ELBOWS

EMT (ELECTRICAL METALLIC TUBING)



90° Elbows

Size	Type	Item Number	
1/2"	• 90°	EMT Elbow	3905
3/4"	• 90°	EMT Elbow	3907
1"	• 90°	EMT Elbow	3910
1 1/4"	• 90°	EMT Elbow	3912
1 1/2"	• 90°	EMT Elbow	3915
2"	• 90°	EMT Elbow	3920
2 1/2"	• 90°	EMT Elbow	3925
3"	• 90°	EMT Elbow	3930
3 1/2"	• 90°	EMT Elbow	3935
4"	• 90°	EMT Elbow	3940

ELBOWS

GRC (GALVANIZED RIGID CONDUIT)

<u>Size</u>	<u>Type</u>	<u>Item Number</u>																												
1/2"	• 90°	GRC Elbow	1905																											
3/4"	• 90°	GRC Elbow	1907																											
1"	• 90°	GRC Elbow	1910																											
1 1/4"	• 90°	GRC Elbow	1912																											
1 1/2"	• 90°	GRC Elbow	1915																											
2"	• 90°	GRC Elbow	1920																											
2 1/2"	• 90°	GRC Elbow </tr <tr> <td>3"</td> <td>• 90°</td> <td>GRC Elbow</td> <td>1930</td> </tr> <tr> <td>3 1/2"</td> <td>• 90°</td> <td>GRC Elbow</td> <td>1935</td> </tr> <tr> <td>4"</td> <td>• 90°</td> <td>GRC Elbow</td> <td>1940</td> </tr> <tr> <td>4 1/2"</td> <td>• 90°</td> <td>GRC Elbow</td> <td>1945</td> </tr> <tr> <td>5"</td> <td>• 90°</td> <td>GRC Elbow</td> <td>1950</td> </tr> <tr> <td>5 1/2"</td> <td>• 90°</td> <td>GRC Elbow</td> <td>1955</td> </tr> <tr> <td>6"</td> <td>• 90°</td> <td>GRC Elbow</td> <td>1960</td> </tr>	3"	• 90°	GRC Elbow	1930	3 1/2"	• 90°	GRC Elbow	1935	4"	• 90°	GRC Elbow	1940	4 1/2"	• 90°	GRC Elbow	1945	5"	• 90°	GRC Elbow	1950	5 1/2"	• 90°	GRC Elbow	1955	6"	• 90°	GRC Elbow	1960
3"	• 90°	GRC Elbow	1930																											
3 1/2"	• 90°	GRC Elbow	1935																											
4"	• 90°	GRC Elbow	1940																											
4 1/2"	• 90°	GRC Elbow	1945																											
5"	• 90°	GRC Elbow	1950																											
5 1/2"	• 90°	GRC Elbow	1955																											
6"	• 90°	GRC Elbow	1960																											





NIPPLES

GRC (GALVANIZED RIGID CONDUIT)

Short stub of threaded pipe which has two male ends.



Nipple

<u>Length</u>	<u>Type</u>	<u>Item Number</u>	<u>Length</u>	<u>Type</u>	<u>Item Number</u>
1/2" •	CL GRC Nipple	10500	1/2" •	5 1/2" GRC Nipple	10555
1/2" •	1 1/2" GRC Nipple	10515	1/2" •	6" GRC Nipple	10560
1/2" •	2" GRC Nipple	10520	1/2" •	7" GRC Nipple	10570
1/2" •	2 1/2" GRC Nipple	10525	1/2" •	8" GRC Nipple	10580
1/2" •	3" GRC Nipple	10530	1/2" •	9" GRC Nipple	10590
1/2" •	3 1/2" GRC Nipple	10535	1/2" •	10" GRC Nipple	10510
1/2" •	4" GRC Nipple	10540	1/2" •	12" GRC Nipple	10512
1/2" •	4 1/2" GRC Nipple	10545	1/2" •	18" GRC Nipple	10518
1/2" •	5" GRC Nipple	10550	1/2" •	24" GRC Nipple	10524

SOUTH CONDUIT

C O N D U I T A N D A C C E S S O R I E S

<u>Length</u>	<u>Type</u>	<u>Item Number</u>	<u>Length</u>	<u>Type</u>	<u>Item Number</u>
3/4" •	CL GRC Nipple	10700	3/4" •	5 1/2" GRC Nipple	10755
3/4" •	1 1/2" GRC Nipple	10715	3/4" •	6" GRC Nipple	10760
3/4" •	2" GRC Nipple	10720	3/4" •	7" GRC Nipple	10770
3/4" •	2 1/2" GRC Nipple	10725	3/4" •	8" GRC Nipple	10780
3/4" •	3" GRC Nipple	10730	3/4" •	9" GRC Nipple	10790
3/4" •	3 1/2" GRC Nipple	10735	3/4" •	10" GRC Nipple	10710
3/4" •	4" GRC Nipple	10740	3/4" •	12" GRC Nipple	10712
3/4" •	4 1/2" GRC Nipple	10745	3/4" •	18" GRC Nipple	10718
3/4" •	5" GRC Nipple	10750	3/4" •	24" GRC Nipple	10724





NIPPLES

GRC (GALVANIZED RIGID CONDUIT)

Short stub of threaded pipe which has two male ends.



Nipple

<u>Length</u>	<u>Type</u>	<u>Item Number</u>	<u>Length</u>	<u>Type</u>	<u>Item Number</u>
1" •	CL GRC Nipple	11000	1" •	5 1/2" GRC Nipple	11055
1" •	2" GRC Nipple	11020	1" •	6" GRC Nipple	11060
1" •	2 1/2" GRC Nipple	11025	1" •	7" GRC Nipple	11070
1" •	3" GRC Nipple	11030	1" •	8" GRC Nipple	11080
1" •	3 1/2" GRC Nipple	11035	1" •	9" GRC Nipple	11090
1" •	4" GRC Nipple	11040	1" •	10" GRC Nipple	11010
1" •	4 1/2" GRC Nipple	11045	1" •	12" GRC Nipple	11012
1" •	5" GRC Nipple	11050	1" •	18" GRC Nipple	11018
			1" •	24" GRC Nipple	11024

SOUTH CONDUIT

C O N D U I T A N D A C C E S S O R I E S

<u>Length</u>	<u>Type</u>	<u>Item Number</u>	<u>Length</u>	<u>Type</u>	<u>Item Number</u>
1 1/4" •	CL GRC Nipple	11100	1 1/4" •	5 1/2" GRC Nipple	11155
1 1/4" •	2" GRC Nipple	11120	1 1/4" •	6" GRC Nipple	11160
1 1/4" •	2 1/2" GRC Nipple	11125	1 1/4" •	7" GRC Nipple	11170
1 1/4" •	3" GRC Nipple	11130	1 1/4" •	8" GRC Nipple	11180
1 1/4" •	3 1/2" GRC Nipple	11135	1 1/4" •	9" GRC Nipple	11190
1 1/4" •	4" GRC Nipple	11140	1 1/4" •	10" GRC Nipple	11110
1 1/4" •	4 1/2" GRC Nipple	11145	1 1/4" •	12" GRC Nipple	11112
1 1/4" •	5" GRC Nipple	11150	1 1/4" •	18" GRC Nipple	11118
			1 1/4" •	24" GRC Nipple	11124





NIPPLES

GRC (GALVANIZED RIGID CONDUIT)

Short stub of threaded pipe which has two male ends.



Nipple

<u>Length</u>	<u>Type</u>	<u>Item Number</u>	<u>Length</u>	<u>Type</u>	<u>Item Number</u>
1 1/2" •	CL GRC Nipple	11500	1 1/2" •	5 1/2" GRC Nipple	11555
1 1/2" •	2" GRC Nipple	11520	1 1/2" •	6" GRC Nipple	11560
1 1/2" •	2 1/2" GRC Nipple	11525	1 1/2" •	7" GRC Nipple	11570
1 1/2" •	3" GRC Nipple	11530	1 1/2" •	8" GRC Nipple	11580
1 1/2" •	3 1/2" GRC Nipple	11535	1 1/2" •	9" GRC Nipple	11590
1 1/2" •	4" GRC Nipple	11540	1 1/2" •	10" GRC Nipple	11510
1 1/2" •	4 1/2" GRC Nipple	11545	1 1/2" •	12" GRC Nipple	11512
1 1/2" •	5" GRC Nipple	11550	1 1/2" •	18" GRC Nipple	11518
			1 1/2" •	24" GRC Nipple	11524

SOUTH CONDUIT

C O N D U I T A N D A C C E S S O R I E S

<u>Length</u>	<u>Type</u>	<u>Item Number</u>	<u>Length</u>	<u>Type</u>	<u>Item Number</u>
2"	• CL GRC Nipple	12000	2"	• 6" GRC Nipple	12060
2"	• 2 1/2" GRC Nipple	12025	2"	• 7" GRC Nipple	12070
2"	• 3" GRC Nipple	12030	2"	• 8" GRC Nipple	12080
2"	• 3 1/2" GRC Nipple	12035	2"	• 9" GRC Nipple	12090
2"	• 4" GRC Nipple	12040	2"	• 10" GRC Nipple	12010
2"	• 4 1/2" GRC Nipple	12045	2"	• 12" GRC Nipple	12012
2"	• 5" GRC Nipple	12050	2"	• 18" GRC Nipple	12018
2"	• 5 1/2" GRC Nipple	12055	2"	• 24" GRC Nipple	12024





NIPPLES

GRC (GALVANIZED RIGID CONDUIT)

Short stub of threaded pipe which has two male ends.



Nipple

<u>Length</u>	<u>Type</u>	<u>Item Number</u>	<u>Length</u>	<u>Type</u>	<u>Item Number</u>
2 1/2" •	CL GRC Nipple	12500	2 1/2" •	7" GRC Nipple	12570
2 1/2" •	3" GRC Nipple	12530	2 1/2" •	8" GRC Nipple	12580
2 1/2" •	3 1/2" GRC Nipple	12535	2 1/2" •	9" GRC Nipple	12590
2 1/2" •	4" GRC Nipple	12540	2 1/2" •	10" GRC Nipple	12510
2 1/2" •	4 1/2" GRC Nipple	12545	2 1/2" •	12" GRC Nipple	12512
2 1/2" •	5" GRC Nipple	12550	2 1/2" •	18" GRC Nipple	12518
2 1/2" •	5 1/2" GRC Nipple	12555	2 1/2" •	24" GRC Nipple	12524
2 1/2" •	6" GRC Nipple	12560			

SOUTH CONDUIT

C O N D U I T A N D A C C E S S O R I E S

<u>Length</u>	<u>Type</u>	<u>Item Number</u>	<u>Length</u>	<u>Type</u>	<u>Item Number</u>
3"	• CL GRC Nipple	13000	3"	• 7" GRC Nipple	13070
3"	• 3" GRC Nipple	13030	3"	• 8" GRC Nipple	13080
3"	• 3 1/2" GRC Nipple	13035	3"	• 9" GRC Nipple	13090
3"	• 4" GRC Nipple	13040	3"	• 10" GRC Nipple	13010
3"	• 4 1/2" GRC Nipple	13045	3"	• 12" GRC Nipple	13012
3"	• 5" GRC Nipple	13050	3"	• 16" GRC Nipple	13016
3"	• 5 1/2" GRC Nipple	13055	3"	• 18" GRC Nipple	13018
3"	• 6" GRC Nipple	13060	3"	• 24" GRC Nipple	13024





NIPPLES

GRC (GALVANIZED RIGID CONDUIT)

Short stub of threaded pipe which has two male ends.



Nipple

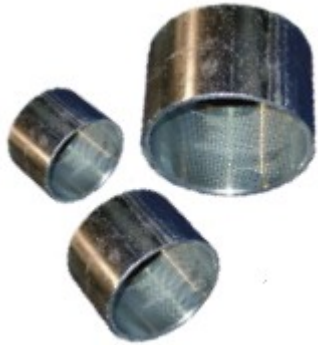
<u>Length</u>	<u>Type</u>	<u>Item Number</u>	<u>Length</u>	<u>Type</u>	<u>Item Number</u>
3 1/2" •	CL GRC Nipple	13500	3 1/2" •	7" GRC Nipple	13570
3 1/2" •	3" GRC Nipple	13530	3 1/2" •	8" GRC Nipple	13580
3 1/2" •	3 1/2" GRC Nipple	13535	3 1/2" •	9" GRC Nipple	13590
3 1/2" •	4" GRC Nipple	13540	3 1/2" •	10" GRC Nipple	13510
3 1/2" •	4 1/2" GRC Nipple	13545	3 1/2" •	12" GRC Nipple	13512
3 1/2" •	5" GRC Nipple	13550	3 1/2" •	18" GRC Nipple	13518
3 1/2" •	5 1/2" GRC Nipple	13555	3 1/2" •	24" GRC Nipple	13524
3 1/2" •	6" GRC Nipple	13560			

SOUTH CONDUIT

C O N D U I T A N D A C C E S S O R I E S

<u>Length</u>	<u>Type</u>	<u>Item Number</u>	<u>Length</u>	<u>Type</u>	<u>Item Number</u>
4"	• CL	GRC Nipple 14000	4"	• 8"	GRC Nipple 14080
4"	• 4"	GRC Nipple 14040	4"	• 9"	GRC Nipple 14090
4"	• 4 1/2"	GRC Nipple 14045	4"	• 10"	GRC Nipple 14010
4"	• 5"	GRC Nipple 14050	4"	• 12"	GRC Nipple 14012
4"	• 5 1/2"	GRC Nipple 14055	4"	• 18"	GRC Nipple 14018
4"	• 6"	GRC Nipple 14060	4"	• 24"	GRC Nipple 14024
4"	• 7"	GRC Nipple 14070			
			5"	• CL	GRC Nipple 15000





COUPLING (COUPLER)

Short length of pipe with two female NPT (National pipe threads), a coupler is a double female while a nipple is double male.

<u>Size</u>	<u>Type</u>	<u>Item Number</u>
1/2"	GRC Conduit Coupling	105
3/4"	GRC Conduit Coupling	107
1"	GRC Conduit Coupling	110
1 1/4"	GRC Conduit Coupling	112
1 1/2"	GRC Conduit Coupling	115
2"	GRC Conduit Coupling	120
2 1/2"	GRC Conduit Coupling	125
3"	GRC Conduit Coupling	130
3 1/2"	GRC Conduit Coupling	135
4"	GRC Conduit Coupling	140
5"	GRC Conduit Coupling	150



CONDUIT BUTT

(AKA Chase Nipple)

Used to terminate threaded conduit to a knockout box or enclosure, where space within the box is limited. Used with a locknut to provide a short raceway between boxes or enclosures. U.L. Approved.

Available upon Request



FLEX-CONDUITS

Aluminum, steel, liquid-tite, seal-tite

Available upon request

SOUTH CONDUIT

C O N D U I T A N D A C C E S S O R I E S

458 Babylon Turnpike
Freeport, NY 11520

Warshaw Inc

63-15 Traffic Ave
Ridgewood, NY 11385

Phone: 718 257 2111

Fax: 718 257 2626

E-mail: warshawinc@aol.com

**2% CASH DISCOUNT, 10TH
PROXIMO NET 30 DAYS**

PRSRRT STD
US POSTAGE
PAID
WALSALL
PIPE CO.

